

Thimphu Structure Plan

Community facilities

Community facilities

“Guarantee access to community facilities”

The Plan aims to improve the availability and accessibility of community facilities through the following components:

- **Standards** – define the standards used to determine the need for community facilities and how this relates to the Centres Hierarchy. This involves adaptation of the Spatial Planning Standards to better reflect the character of Thimphu
- **Co-location and integration** – define how facilities can be provided together to improve the ease of delivery.
- **Deficit and Demand** – based on standards, set out the current deficit in access to community facilities and projected future need according to the projected maximum population.



Community facilities strategies

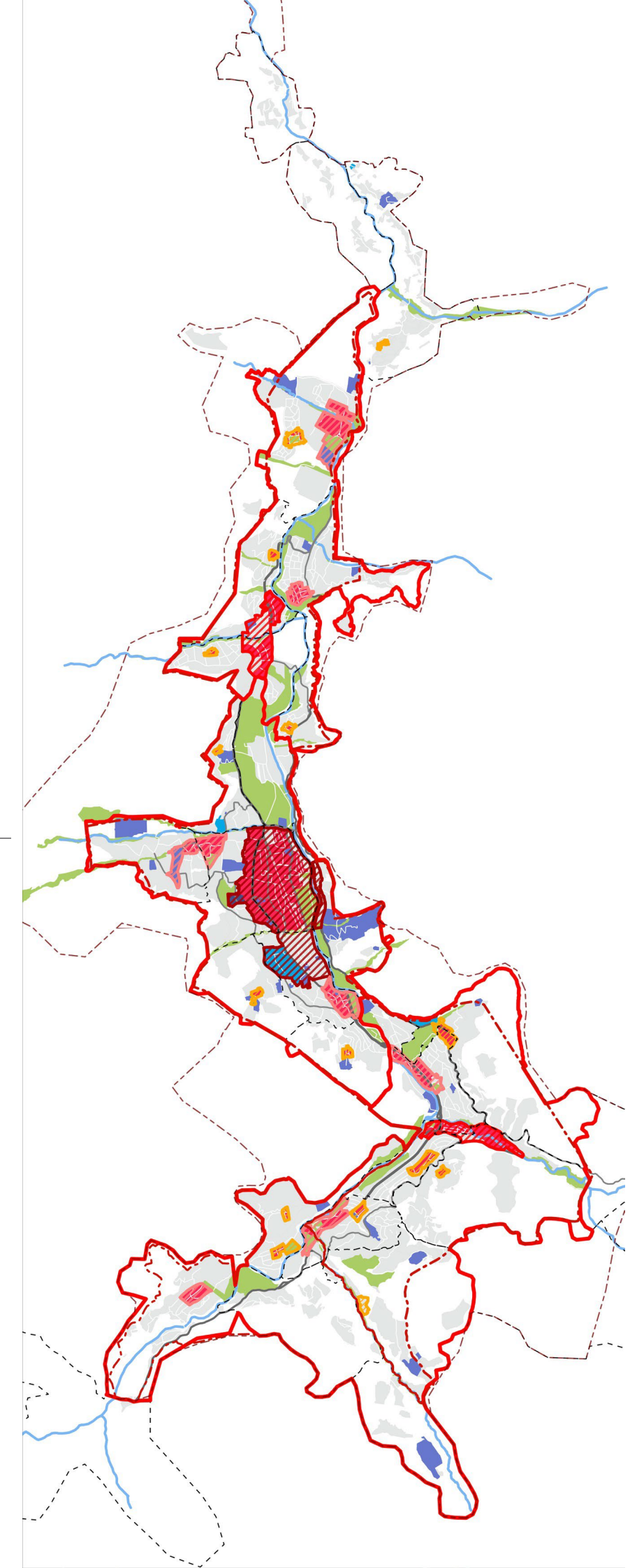
The following sets out the community facility needs by 2047 across the city. This is total need, it does not take into consideration existing provision.

1. Deliver approximately 10 primary schools, 3 lower, middle and high secondary schools across Northern Thimphu.
2. Deliver the equivalent of 9 Thromde Healthcare Clinics across Northern Thimphu.
3. Deliver Taba Forest Park for Northern Thimphu.
4. Deliver approximately 18 primary schools across the city core, 5 lower, middle and higher secondary schools for the City Core.
5. Deliver Thimphu Royal Park and Centenary Park to meet the needs of the sub district centres at the city core and a metropolitan park.
6. Deliver approximately 12 Thromde Healthcare Clinics across the city core.
7. Upgrade the National Referral Hospital or Thimphu General Hospital.
8. Deliver approximately 12 primary schools across Southern Thimphu, 5 lower, middle and higher secondary schools for Southern Thimphu.
9. Deliver approximately 12 Thromde Healthcare Clinics across Southern Thimphu.
10. Deliver the equivalent of 6 hospitals at Southern Thimphu.
11. Deliver Babesa Ecological Park to function as a city park for Southern Thimphu.

LEGEND

KEY

- Thromde Boundary
- Southern Extension Boundary
- Sub District Boundary
- Neighbourhood Boundary
- Study Area Boundary
- Development Areas
- River
- Centres Hierarchy
 - City Centre
 - Sub-district Centre
 - Neighbourhood Centre
 - Local Centre
- Land Use
 - Community Facility
 - Mixed Use
 - Education
 - Healthcare
 - Green Space



Key topic 1 / Community facilities standards

The Plan aims to ensure that community facilities are of **high-quality standards** and in convenient places in close **proximity** to where people live, in accordance with a clear hierarchy.

The Plan proposed interventions include:

- Provide facilities to **best-practice international standards**;
- Promote adequate access to **health and education** according to population catchments and to plan their delivery in order to satisfy not just the current but the expected future demand.
- Determine for health facilities appropriate **standards for the population catchment**, the scale and types of provision assessed against the current distribution and how that would relate to the centres hierarchy;
- Definition for **education facilities of a flexible model** adapting the breakdown of the number of different aged children per population as this evolves over time or by location.

Community facilities, such as health care facilities, are not adequate for the growing population



Provide facilities in accordance to international best practices

Key topic 2 / Deficit and demand

The plans aims to improve community facilities, in particular health and education facilities, across Thimphu by addressing the current deficit. The Plan proposed interventions include:

- Deliver repairs and **increase resilience** of existing facilities;
- **Increase accessibility** through the co-location of community facilities to create critical mass, reduce the amount of land required, encourage linked trips, and limit travel need to support equitable access;
- **Increase the capacity** of existing facilities and create new ones according to demand.



Existing facilities in Thimphu

Source: TSP



An urban realm that promotes active travel to access facilities | Source: dezeen, worldbuildingsdirectory