

Thimphu Structure Plan

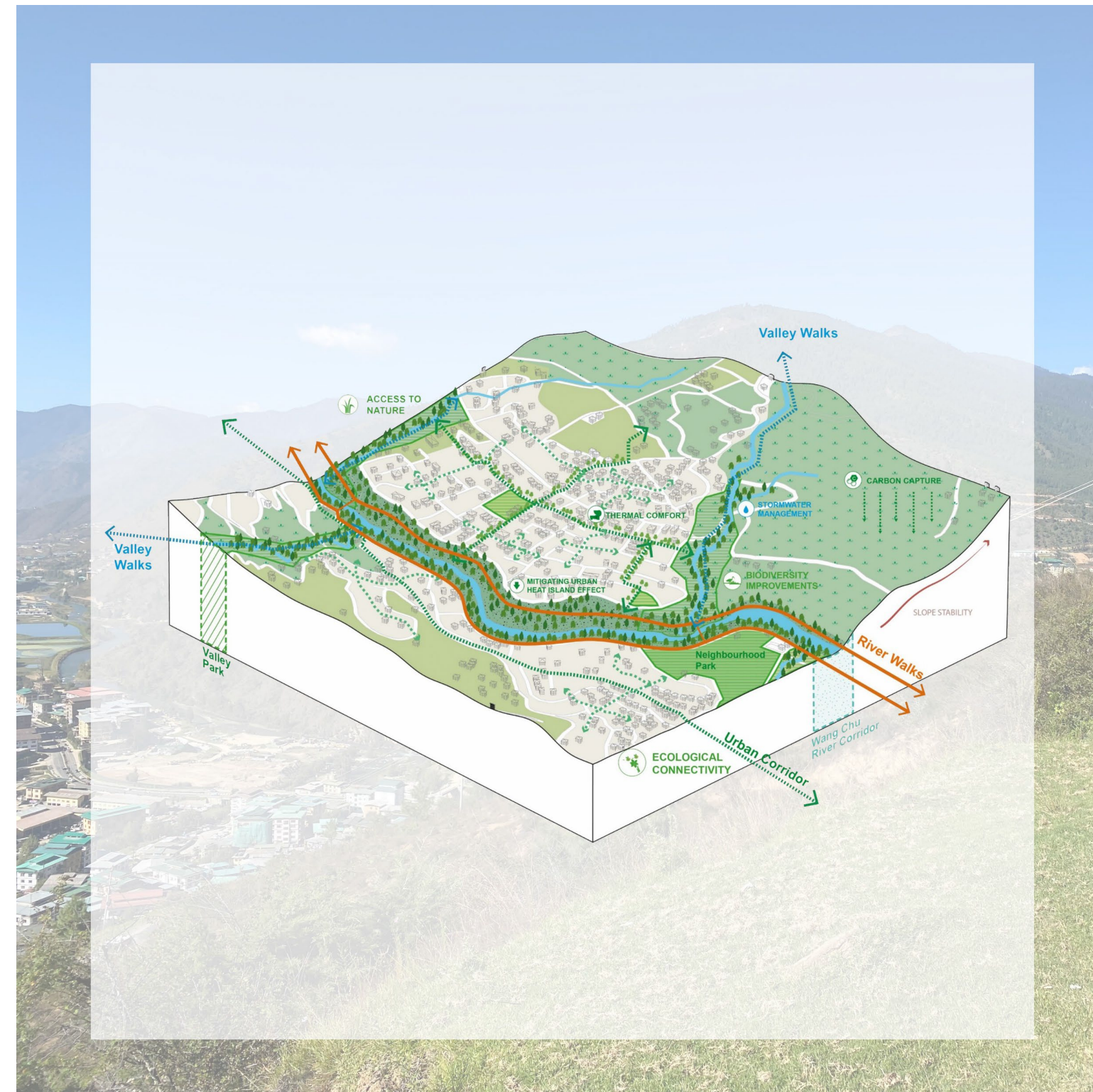
Green Spaces and Corridors

Green Spaces and Corridors

“Protecting the people and the natural environment”

The Plan comprises of a variety of **green open spaces and corridors** that link to core objectives of **protecting the natural environment and protecting people**, providing new and enhanced public spaces, and **connecting communities and nature**.

A well-connected, inclusive and beautiful network of multifunctional green infrastructure can restore harmony between people and nature, celebrate traditional Bhutanese identity, support sustainable economic growth and deliver resilience benefits for the City. This green network aims to control urban sprawl, increase flood resilience, improve air quality, reduce urban heat, and improve access to natural open space. It can also support other critical infrastructures, such as stormwater drainage and transport networks, and deliver economic, social, and environmental benefits to Thimphu and its communities.

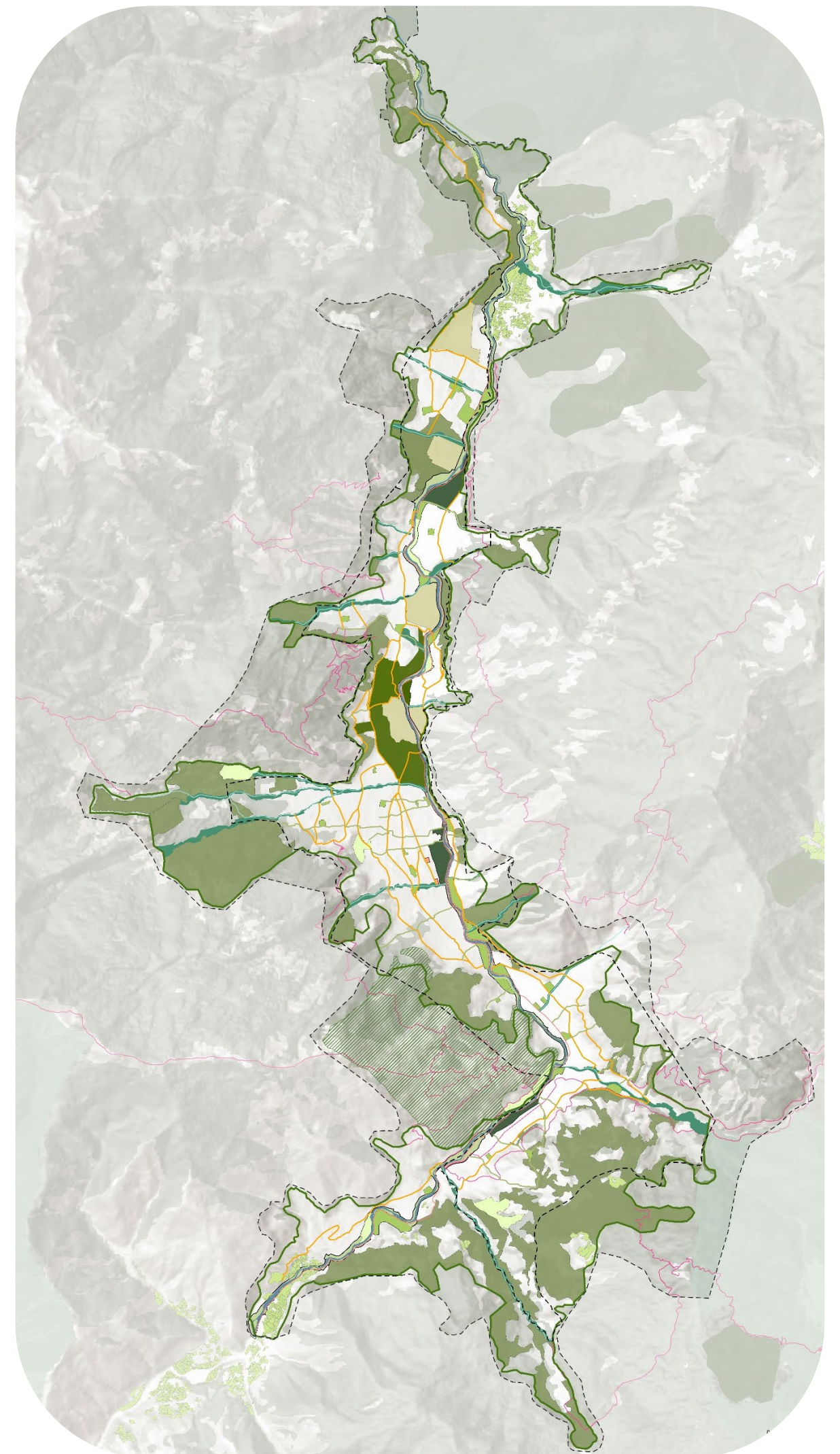


Key proposals

1. Transforming the existing Expressway into a “**Royal Boulevard**”. This will function as a green spine, incorporating Green Infrastructure, promoting active travel and facilitating better pedestrian permeability.
2. The development of connected ‘**Green Streams**’ that will provide uninterrupted walking routes, opening up the channels in appropriate locations, improve public amenity and support new aquatic habitats.
3. **Multimodal green streets** designed to promote active travel, integrate street greening, and link communities north-south along the contours.
4. Improvements to the **City’s recreational trails**, including development of a network of routes to link with the peripheral forest walk, and reconnecting heritage structures to trails.
5. **Streetscape improvements** to integrate street tree planting, interconnected footways, removal of clutter and improved crossings.

LEGEND

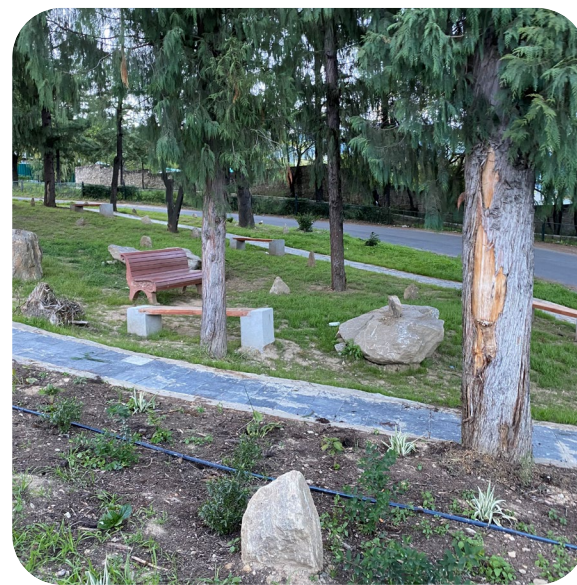
| KEY | |
|-----|--------------------------|
| | Thimphu Thromde boundary |
| | Study area |
| | Green Belt boundary |
| | Regional Park |
| | Metropolitan Park |
| | City Park |
| | Neighbourhood Park |
| | Private landscape |
| | Forest Pocket |
| | Local Nature Reserve |
| | Agricultural Landscapes |
| | Urban Green Corridor |
| | River Walk |
| | Valley Park |
| | Valley Walk |
| | Green Stream |
| | Trails |



Key topic 1 /Open and Green spaces

The Plan aims to ensure that **new and enhanced green open spaces** will support the health and wellbeing of Thimphu's communities. The Plan proposed interventions include:

- A **hierarchy of new and enhanced open spaces** across the, to include the following typologies Metropolitan Park, City Park, Neighbourhood Park, Small Open Space and Pocket Parks, Heritage Open Space;
- Appropriate provision of **play space**, local parks and growing spaces at the neighbourhood scales, associated with new urban developments;
- Appropriate **policies for the protection of open spaces** and habitats (preserving riparian habitats along key tributaries, pockets of natural forest, network of local natural reserves).



Diverse typology of Green and open spaces across the city



Play spaces at the neighborhood scale



Open spaces protection policies

Key topic 2 /Green Streets and Corridors

The Plan aims to permeate green streets and corridors into the urban environment to deliver high quality and accessible green infrastructure, manage the pressures of continued urban growth, and achieve sustainable and resilient urban development. The proposed interventions include:

- Streetscape improvements to integrate street tree planting, interconnected footways, and improved crossings;
- Tree lined streets and naturalised river corridors linking key destinations with new and enhanced open spaces.



Above: Streetscape current condition in the city core



On the left: Example of improved streetscape

Source: TSP, Hastingstowndeal



Enhancement of the river corridor | Source: TSP