



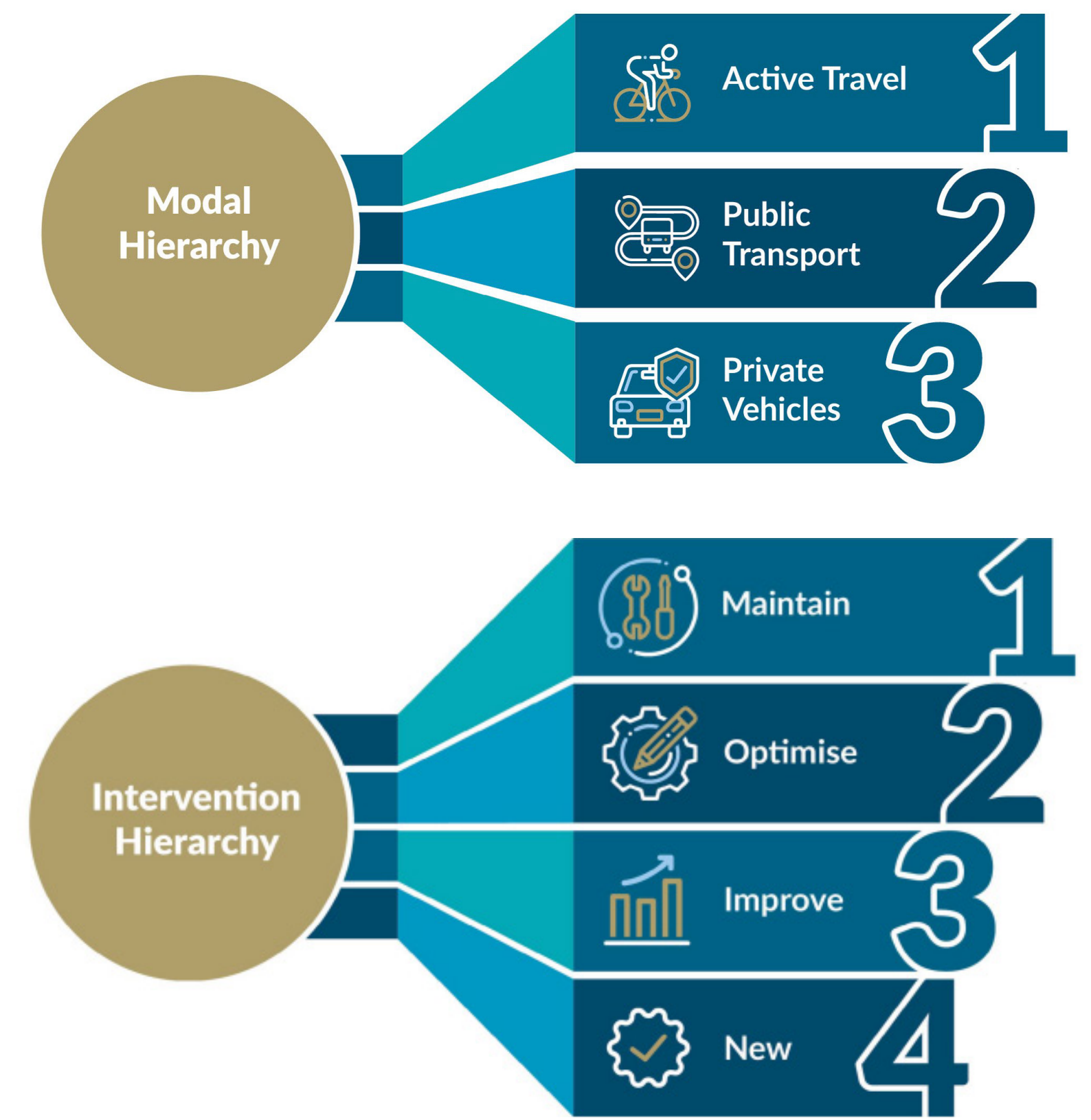
MAYNOOTH TO LEIXLIP PROJECT

Overview

The potential transport options have been developed to include all modes in the National Investment Framework for Transport in Ireland hierarchy which seeks to prioritise active travel modes such as walking and cycling, followed by public transport over the use of private vehicles.

The potential transport options have also been considered incrementally in line with the hierarchy of intervention which seeks to make the best use of the existing asset through maintenance, optimisation, improvement and finally through the construction of new infrastructure.

The potential transport options to address the issues include bus, rail, active travel, demand management, park and ride and corridor options (contain bus and road based options).

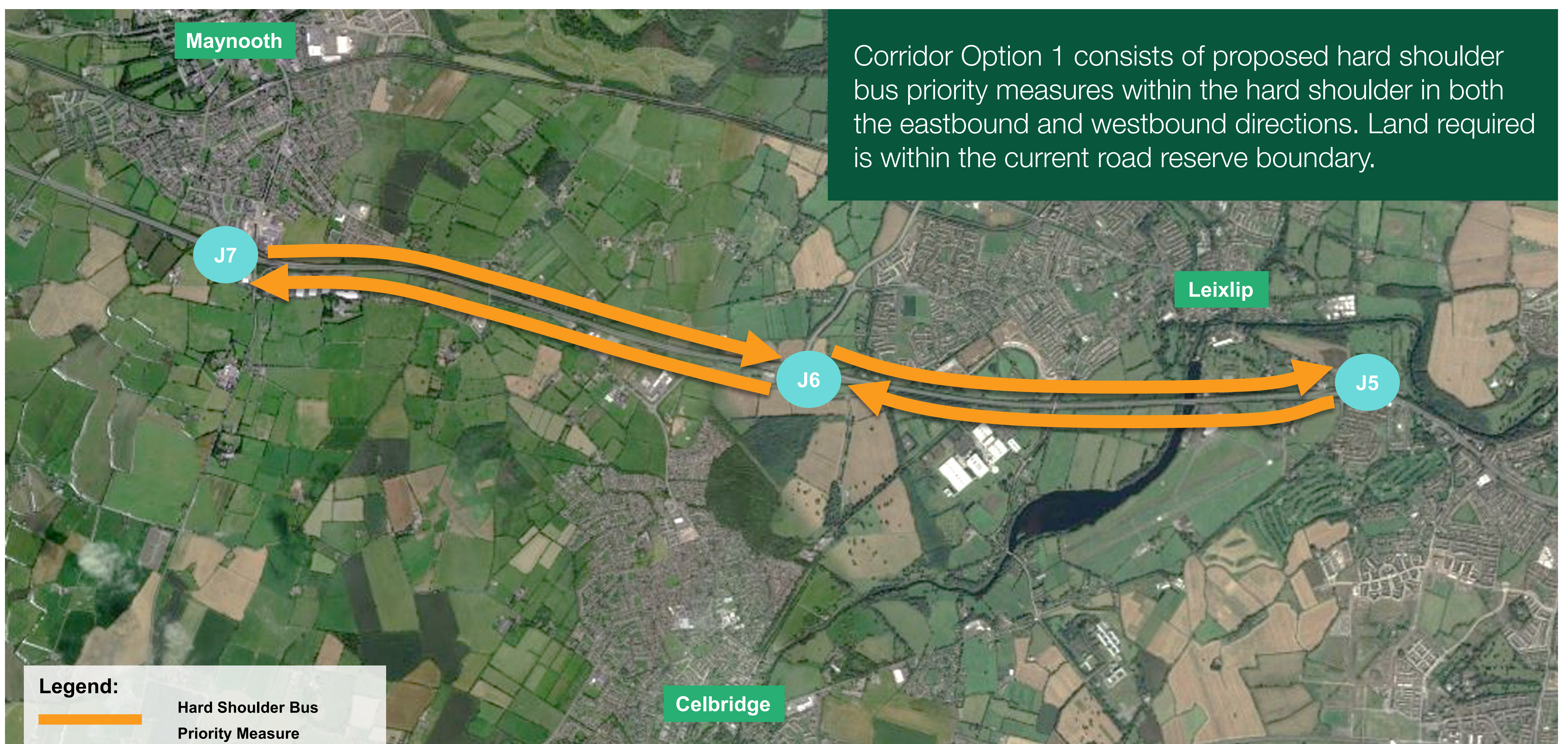


National Investment Framework for Transport in Ireland - Modal and Intervention Hierarchy

Corridor Options (Corridors contain Bus and Road based Options)

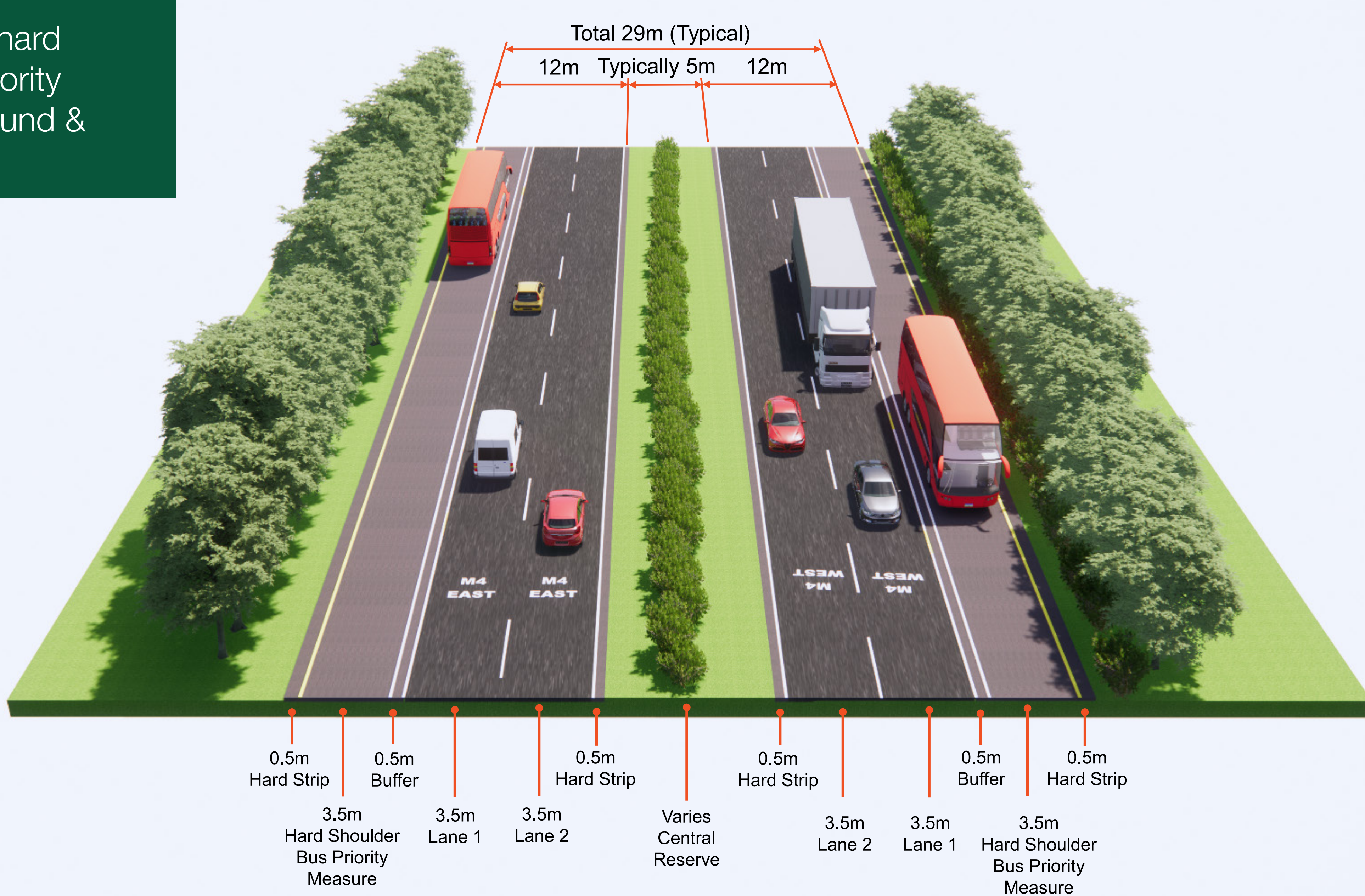
Potential Transport Options that have been shortlisted and will be taken forward for further assessment

Corridor Option 1

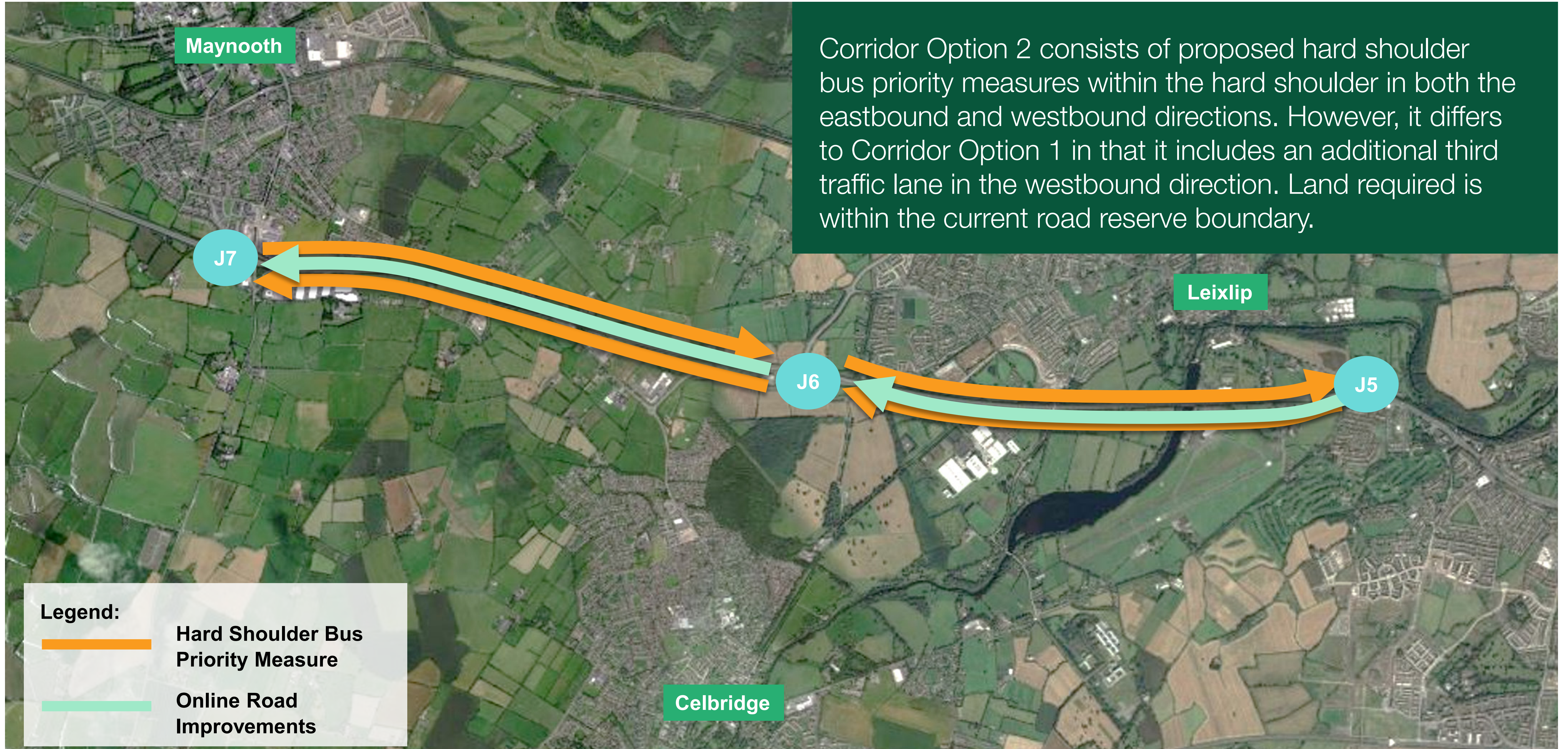


Legend:
— Hard Shoulder Bus Priority Measure

Typical detail of hard shoulder bus priority measure eastbound & westbound



Corridor Option 2



Legend:
— Hard Shoulder Bus Priority Measure
— Online Road Improvements

Typical detail of hard shoulder bus priority measure eastbound & westbound & 3rd lane westbound

