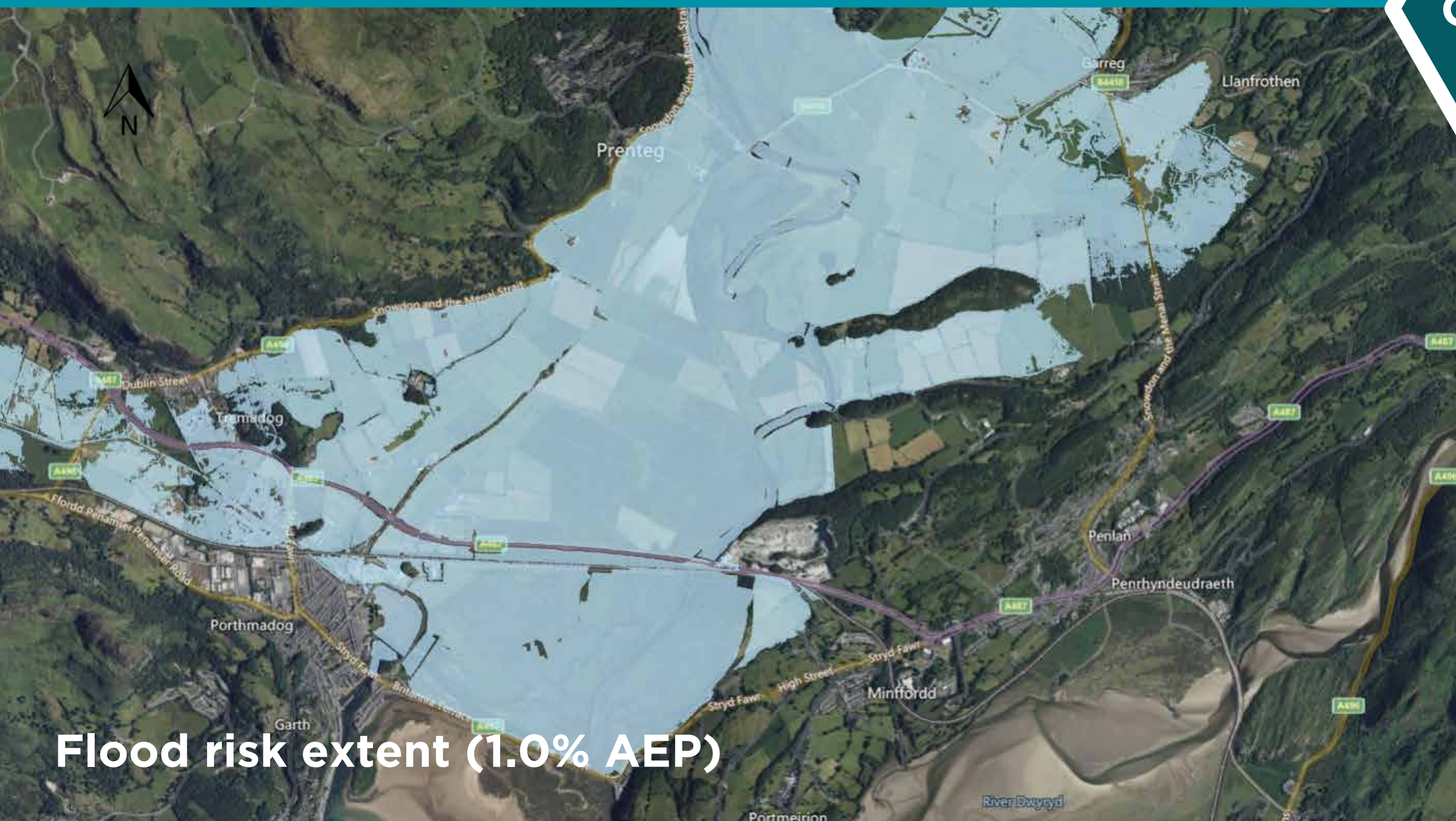


Porthmadog Flood Risk Management Project | 6

Long list of options

We are exploring options to more effectively manage the long-term flood risk to people and homes in Porthmadog, Tremadog and surrounding communities, and to maximise the sustainable management of natural resources. We welcome your input on any of these or other options, as well any wider environmental, social, and economic opportunities available.

A combination of options will likely be needed to manage flood risk from rivers and the coast. This may change over time (short/medium/long term) as we try to manage the effects of sea level rise and climate change.



Flood risk extent (1.0% AEP)

Sustainable Management of Natural Resources

Through this project we will explore and adopt, where possible, principles of sustainable management of natural resources.

This will include natural flood management options, and we will assess catchment wide environmental opportunities, aimed at maintaining and enhancing biodiversity and ecosystem resilience.